

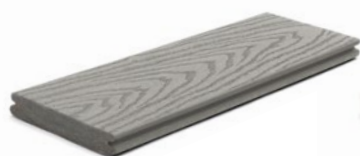
## MID-PRICED, HIGH-PERFORMANCE DECKING & FASCIA

Trex Select® decking and Trex® Fascia are wood thermoplastic composite lumber (WTCL) boards with an integrated shell that covers the boards on the top surface and sides. The integrated shell consists of a proprietary surface formulation that produces a natural, wood-like grain pattern finish. An alternative to naturally durable hardwood lumber, Select Decking and Fascia are ICC-ES SAVE-certified to be a minimum of 95.4% recycled content of wood fiber and polyethylene by weight.



### DECKING

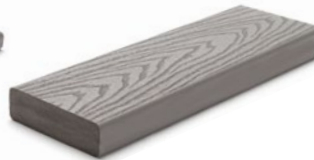
### FASCIA



1" Grooved edge



1" Square edge



2" Square edge



8" or 12" Widths

FEATURES	DECKING BOARDS		FASCIA BOARDS	
	1" x 6"	2" x 6"	8"	12"
Actual Dimensions - Standard	.82" x 5.5"	1.3" x 5.5"	.56" x 7.25"	.56" x 11.375"
Actual Dimensions - Metric	20 mm x 140 mm	33 mm x 140 mm	14 mm x 184 mm	14 mm x 288 mm
Available Lengths - Standard	12', 16', 20'	12', 16', 20'	12'	12'
Available Lengths - Metric	365 cm, 487 cm, 609 cm	365 cm, 487 cm, 609 cm	365 cm	365 cm
Grooved Edge	X			
Square Edge	X	X	X	X
Weight per Lineal Foot	2.2 lbs	3.4 lbs	2.0 lbs	3.3 lbs

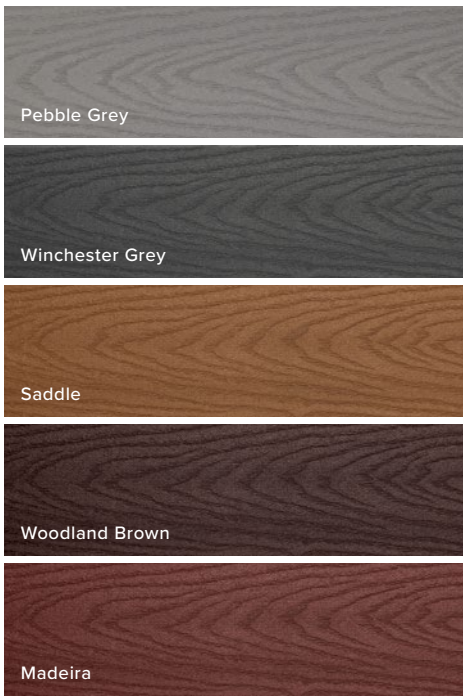
**PHYSICAL & MECHANICAL PROPERTIES**

TEST	TEST METHOD	VALUE
Flame Spread	ASTM E 84	Class B
Thermal Expansion	ASTM D 1037	1.9 × 10 <sup>-5</sup> in/in/°F
Moisture Absorption	ASTM D 1037	< 1.2%
Screw Head Pull-Through	ASTM D1761	161 lbf/screw*
Fungus Resistance	ASTM D1413	Rating – no decay
Termite Resistance	AWPAE1-72	Rating = 9.7

\*Fastener used in testing: #8 x 2.5" approved Stainless Steel Screw

**COLORS**

Earth Tones (monochromatic)



**FASTENERS**



**Trex Hideaway® Hidden Fastening System**

Self-gapping, glass-filled nylon fastener with 304 grade stainless steel, sharp point screw for wood framing.

Other approved fasteners include, color-matched composite deck screw, matching composite plug with composite screw, color-coordinated fascia screw and uncoated stainless steel fascia screw.



For a full list of approved fasteners, download our Installation Guide at [trex.com/literature](https://www.trex.com/literature)